



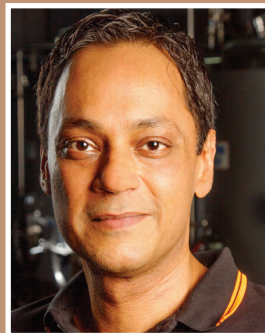
Vintage Industrial





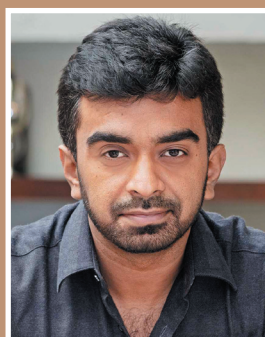
Gateway Taproom, located in Mumbai's BKC area is designed by Bangalore-based architect **Jatin Hukkeri** of WAD Design through an old-fashioned industrial approach. It has a basic look of comfort and timeless trendiness, which is aligned to their brand's ideology and vision.

al Style



“ **ANAND MITTAL,**
FOUNDER & PARTNER,
GATEWAY TAPROOM

“The seating capacity was important for us but we also wanted large tables providing sufficient moving space for our guests. Hence, we have tried to optimise the seating capacity but at the same time we have tried to strike a balance by ensuring our guests have enough space because they tend to spend a lot of time at Gateway Taproom.”



“ **JATIN HUKKERI,**
PRINCIPAL ARCHITECT,
WAD DESIGN

“Restaurants often have multiple types of lighting fixtures to help create the overall atmosphere and design image. By using multiple lighting fixtures a design image can create brilliant displays of decor, and architecture while providing a primary focus on the dining table. The dining table is where light balance becomes crucial for a restaurant and at times natural lighting does the best job.”

BRIEF

To create an absolutely effortless and simple space without any overbearing or over-the-top design elements. A space which would render itself suitable for corporate lunches, daily/weekly get-together and casual walk-in guests alike.

DESIGN CONCEPT

The design of the space is in a divisional manner which is currently visible on site for two reasons - primary being the prominence that the bar counter deserves would have been extremely common to achieve on the same floor level. Second, to give flexibility to all users to use in a manner necessary as per occasions viz., group meetings, office get together, parties and occasions of all forms. It is always very important to bifurcate spaces smartly so that while one part of the space is occupied by a certain group/ party, the other part still remains open to the other guests / walk-in / another party.

HIGHLIGHTS

The Gateway Taproom is predominantly done up in wood right from the bar set-up to the tables that are spread across, making room for up to 100 people. The walls have been kept simple with white exposed brick and a strip of orange with a touch of signature graffiti to bring in a sense of balance to blend in with the wood seamlessly and at the same time to reflect the brand colours. The ceiling continues in the theme of being simple and exposed to a large extent, complimented with the high-bay pendant lighting with perfect balance of daylight. ▲